

QUICK INSTALL GUIDE

KVM-410

VERSION 1.0



D-Link[®]

WIRED

System Requirements

- Pentium III 1 GHz processor or equivalent
- Screen resolution of 1024 x 768
- Browser must support 128 bit data encryption
- Internet connection speed of at least 128 kbps
- For the Windows Client, DirectX 7.0 or higher
- For the Java Client, Sun's Java 2 (1.4 or higher)
- For the Log Server, the Microsoft Jet OLEDB 4.0 driver

Package Contents

- D-Link KVM-410 IP KVM Switch
- Detachable 6 ft. KVM Cable
- Manual and Warranty on CD
- Quick Installation Guide
- Rack Mount Kit
- Power Adapter
- CAT5 Ethernet cable



If any of the above items are missing, please contact your reseller.

Hardware Overview

Front Panel

Reset Button

Press and hold this button to restart the KVM-410. Press and hold this button for 2 or more seconds while powering the KVM-410 on to perform a system reset.

Link LED

A GREEN LED indicates a Client program is accessing the device.



Data Speed LED

A GREEN LED indicates a 10Mbps connection. An ORANGE LED indicates a 100Mbps Ethernet connection.

Power LED

An ORANGE LED indicates the KVM-410 is powered on and ready for operation.

Rear Panel

KVM Port

Connect the included KVM cable that links to the existing server, workstation, or KVM switch.

RS-232 Port

This port is used when connecting a PDU remote power management module.



Local Console

Connect the keyboard, mouse, and monitor cables from the local console here.

RJ-45 Port

Connect the LAN or WAN ethernet cable here.

Hardware Installation

Power off the existing KVM switch, server or workstation that will be connected to the KVM-410.

Plug the local monitor, keyboard and mouse into the KVM-410 Console Ports.



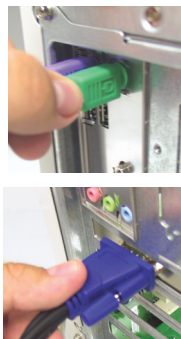
Connect the provided KVM cable to the PC/KVM port.



Use the KVM cable provided to connect the KVM-410's PC/KVM port to the Keyboard, Video and Mouse ports of the existing KVM switch, server, or workstation.



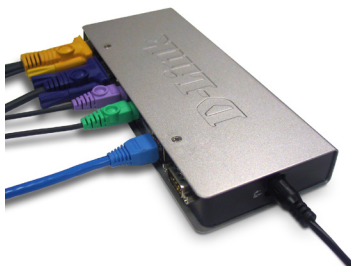
OR



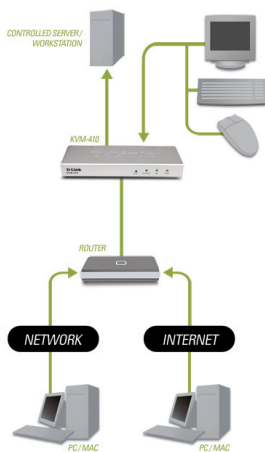
Plug the LAN or WAN ethernet cable into the RJ-45 LAN port.



Connect the power adapter to the KVM-410 and then plug in the adapter to an AC power source.



Turn on the server, workstation, or existing KVM switch.



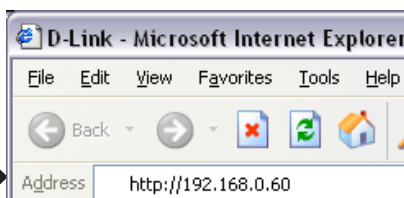
Logging In

The KVM-410 can be managed and configured with an Internet browser. To configure the KVM-410 using an Internet browser, you must first log into the device by browsing to it's IP Address.

When first powered on, the KVM-410, by default is set to obtain an IP Address through DHCP. If it does not obtain an IP Address after 30 seconds, the KVM-410 automatically sets a static IP address of 192.168.0.60:

Note: Your IP Address may be different from the example shown here. See the manual included on the product CD for other methods of determining the IP Address of the KVM-410.

Open a web browser and in the address bar, enter the IP Address of the KVM-410.



A Security Alert dialog box will appear. **Click Yes** to accept the certificate to be redirected to the login screen.



Provide a user name and password to login to the device. The default user name is **administrator**, and the default password is **password**.



The login form has a black header with 'KVM-410 Login' in white. Below the header are two input fields: 'Username:' and 'Password:'. At the bottom are two buttons: 'Login' and 'Reset'.

After logging in, the KVM-410 *Main Page* will appear. This page contains a menu at the top of the page for configuring the KVM-410 and links to the client software utilities on the left side.

The main page has a green header with the D-Link logo. Below the header is a navigation bar with tabs: 'KVM-410', 'GENERAL', 'NETWORK', 'SECURITY', 'RADIUS', 'USERS', 'CUSTOMIZATION', and 'FIRMWARE'. On the left is a sidebar with links: 'APPLY', 'WINDOWS CLIENT', 'JAVA CLIENT', 'POWER MANAGEMENT', 'LOG', and 'LOGOUT'. The main content area shows a configuration form for the 'SECURITY' tab with fields for 'Device Name' (KVM-410), 'MAC Address' (00-4B-54-00-00-81), and 'Firmware Version' (1.0.060).

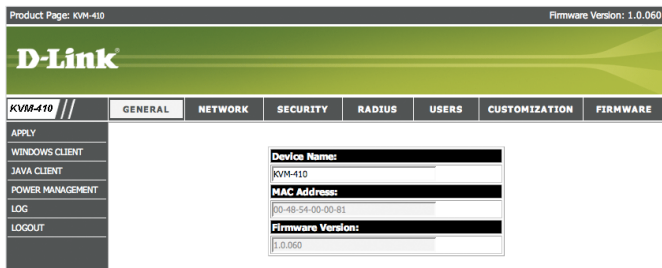
The installation and configuration of the KVM-410 is now complete.

Windows Client

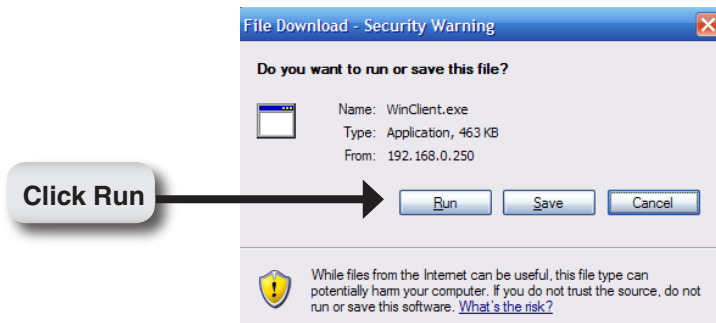
The Windows Client utility allows users remote access to the KVM-410 and control of any connected servers or workstations.

Note: Requires DirectX 7.0 or higher. To use the Java Client, refer to the product manual included on the CD.

To run the Windows Client utility, select *Windows Client* from the KVM-410 Main Page.

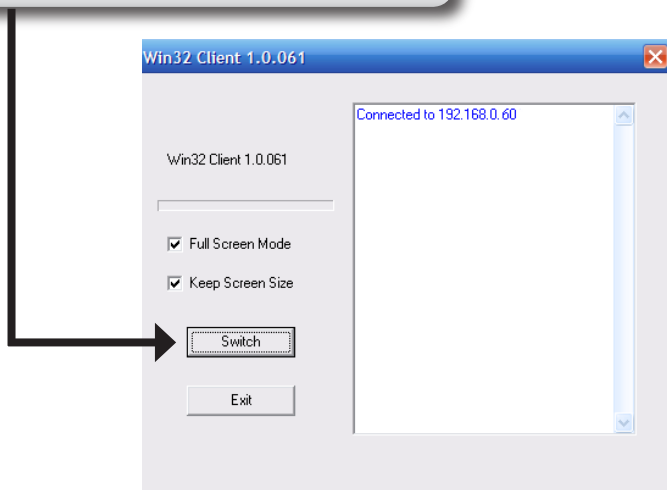


A File Download prompt appears:

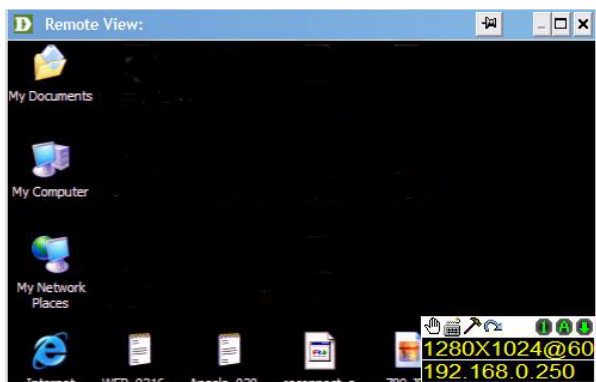


When the Windows Client utility has loaded the following screen will display:

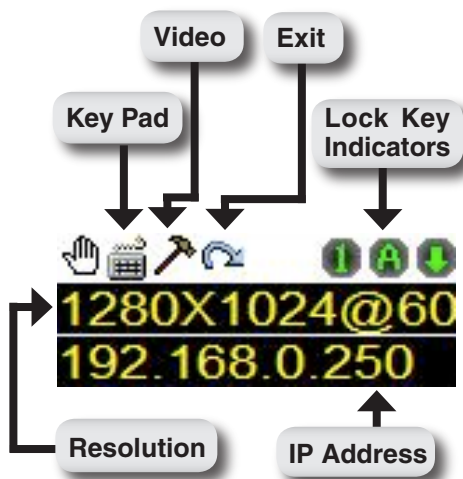
Click Switch to take control of the server or workstation the KVM-410 is connected to.



The remote display will appear on your desktop:



A small control panel is located in the lower right hand corner of the screen. This panel contains configuration options for the remote display.



You can now access the KVM-410 remotely through the Windows Client utility.

Technical Support

D-Link's website contains the latest user documentation and software updates for D-Link products.

U.S. and Canadian customers can contact D-Link Technical Support through our website or by phone.

United States

Telephone

(877) 453-5465

Twenty four hours a day, seven days a week.

World Wide Web

<http://support.dlink.com>

Canada

Telephone

(800) 361-5265

Monday through Friday, 7:30am to 9:00pm EST.

World Wide Web

<http://support.dlink.ca>



Version 1.0
May 26, 2006

Copyright ©2006 D-Link Corporation/D-Link Systems, Inc. All rights reserved. D-Link and the D-Link logo are registered trademarks of D-Link Corporation or its subsidiaries in the United States and other countries. Other trademarks are the property of their respective owners. Product specifications, size and shape are subject to change without notice, and actual product appearance may differ from that depicted herein.